



Planning

Civil
Engineering
Consultancy

Site
Investigation

Specialist
Testing

Sports
Surface
Advice

Project
Management

www.sportslabs.co.uk

Ref: 2056/1432/2/SR

20th September 2006

SIS Manufacturing
Tavistock works
Glasson Ind Est.
Maryport
Cumbria
CA15 8NX

For the Attention of Craig Jack

Dear Craig,

Please find the test results for the submitted carpet sample (Leisure Lann 40 FF) for Flammability testing in accordance with DIN 51960.

The test results are shown in tabular format.

TEST RESULTS			
Test	Mean Result mm		Specification Limits
	With 20mm of sand infill	Without infill	
Flammability	Class 1	Class 2	<50mm Class 1 > 50mm Class 2

The laboratory results show that the flammability of the carpet tested without any infill achieve a class 2 classification. When tested with 20mm layer of infill sand, to prevent the backing from burning it achieves a class 1 classification.

Kind Regards

Sean Ramsay
Technical Manager



Sports Labs Ltd

Tel: +44 (0)845 602 6354
Fax: +44 (0)845 605 6356
Email: info@sportslabs.co.uk

Head Office:

12b Nasmyth Court
Houstoun Industrial Estate
Livingston
EH54 5EG

Regional Locations:

Durham
Birmingham
London

Registered in Scotland No. 186755



1. Test Description

Flammability was tested in accordance with DIN 51960. A sample of the carpet is set on fire under the test. As a result the size of the burned spot is examined and the fact whether the fire is self-extinguishing. If the size burned spot is within 50 mm, the classification is class 1, if the burnt area is bigger, the sample is classified as class 2. The flammability test is carried out five times. The diameter of the burn is measured afterwards to the nearest 1mm.

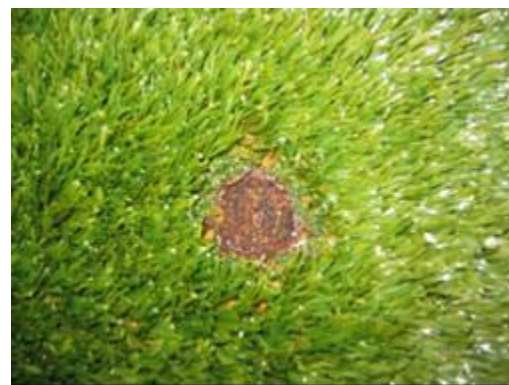
2. Test Data

Test Results diameter of burn (mm)		
Measurement	Without Infill	With 20mm sand Infill
1	>50	47
2	>50	45
3	>50	49
4	>50	43
5	>50	46
Average	>50*	46
DIN 51960 Classification	Class 2	Class 1

* Due to the fact that the backing caught on fire the test had to be aborted. To prevent the backing from burning and to test the flammability of the fibres only, a 20mm layer of sand was placed into the pile of the carpet, as per your instructions on the use of the carpet.



Sample with no infill



Sample with 20mm sand infill.